

Installation Instructions for McAfee VirusScan 8.0i Enterprise

Off-Campus Version

Congratulations! You have taken an important step to protect your computer against computer viruses by taking this time to update to the newest version of McAfee VirusScan. Now more than ever, having adequate virus protection is a necessity. Computer viruses are being developed at a faster rate than ever before, causing not only problems for individual computers, but for entire networks and the Internet. Saint Mary's College supports McAfee VirusScan, and this software is available to all faculty, staff, and student computers used for college work. Here now are instructions on how to install the newest version of VirusScan onto your computer. If you have any questions or problems, please contact the Information Technology Help Desk at x4715, or at helpdesk@saintmarys.edu.

Creating a CD with VirusScan files

If you are an off-campus student, you will need to create a CD with the VirusScan installation files to take home and install on your computer. We suggest using a cluster or classroom PC to create this CD, and that you have a blank CD-R or CD-RW to create this CD. If you are a faculty or staff member, using your office computer will work as well. Directions on how to create a data CD can be found at <http://www.saintmarys.edu/~clusters>. Once you are ready to create a CD, use all the files found in the folder **P:\Software Distribution\VirusScan 8 Off-Campus** in the Public (P:) network drive on diamond. Once you have created a CD with the files found in the above mentioned directory, you will be ready to start installing VirusScan on your PC at home.

System Requirements:

Make sure that your computer meets the following requirements in order to install VirusScan 8.0i Enterprise. If your computer does not satisfy these requirements, please consider using our older version of VirusScan, if you are not using it already.

1. An Intel Pentium class or comparable processor (Intel Celeron, AMD K-6, etc.) of at least 166 MHz.
2. At least 75 MB of free hard disk space.
3. At least 32 MB of memory (RAM).
4. Microsoft Windows 2000 Professional SP 1, 2, or 3, or Windows XP Home Edition SP1 or Professional SP1. (Note that Windows 95, 98, and ME cannot use this software!)

To check for these requirements, right click on the **My Computer** icon on your desktop, and select **Properties** from the menu. A screen should appear that tells you which version of Windows you are using and the amount of RAM that your computer has. Then double click on **My Computer** and right click on your hard disk (usually the C: drive) and select **Properties**

from the main menu. This will give you how much hard disk space that you have available. You should be able to easily meet these hardware requirements if you are using the supported versions of Windows listed here.

Before you go any further, make sure that you are logged in using an account with administrator privileges in order to uninstall or install any programs. If you are not sure, click on your **Start** button and go to **Control Panel**. Open the **User Accounts** control panel by double clicking on its icon, and then locate the user account that you are currently logged in as. The words “Computer Administrator” should be located under the name of your user account. If you are not logged in as a computer administrator, please log out of Windows and log into an administrator account. If you do not know the password of an administrator account, please contact whoever set up your computer.

Uninstalling Existing Anti-virus Software

Before you install VirusScan 8.0i Enterprise, you need to make sure that existing anti-virus software is removed from your computer. Running more than one anti-virus product on a computer can cause problems on your system and is not a good idea. Some examples of anti-virus software are Norton or Symantec Anti-virus, McAfee VirusScan 4.51, or Trend Micro’s anti-virus product. Follow these steps to remove your anti-virus software before installing VirusScan 8.0i Enterprise.

1. Click on your **Start** button and select **Control Panel** from the Start Menu.
2. Click on the icon for **Add or Remove Programs**. You should then see a screen similar to the one shown to the right.



3. Scroll down the list until you find your anti-virus software, and then click on that software’s name so that the name is highlighted. The computer in the example shown to the right has the older version of McAfee VirusScan installed.



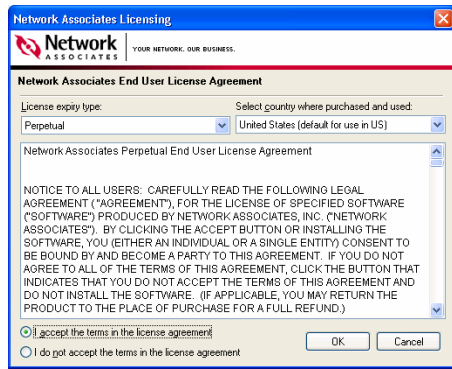
4. Click on the **Remove** button to start removing the software from your computer. Windows will ask you whether or not you are sure you want to remove the software. Click on the **OK** button to continue.
5. For VirusScan 4.51, no more user intervention is required to remove the software, but the uninstaller program for each software product is different. Please follow the screens to uninstall your old anti-virus software if it responds differently.
6. You have now uninstalled your old software. Please close out of the **Add or Remove Programs** screen to continue. You are now ready to start installing McAfee VirusScan 8.0i Enterprise.

Installing VirusScan 8.0i Enterprise

Note: The installation of VirusScan 8.0i Enterprise requires a reboot after its completion. Please be sure to save any work you have been doing and close out of any open programs you may have been using before starting the installation process.

1. First you need to put the CD into your CD-ROM drive to access the files. Double click on the **My Computer** icon located on your desktop, and then open your CD-ROM drive (usually D: or E:). Open the folder called **VirusScan Enterprise 8.0i**.
2. Locate the file called **Setupvse.exe** in the **VirusScan Enterprise 8.0i** folder. Execute the file by double-clicking on it with your mouse.
3. Now a screen like the one to the right will appear. Click on the **Next** button to continue with the installation.





- The next box to appear will be like the one shown to the left. Select **Perpetual** from the drop down box under **License expiry type**. Click on the button next to **I accept the terms of the license agreement** at the bottom of the window, and then click on the **OK** button to continue with the installation.

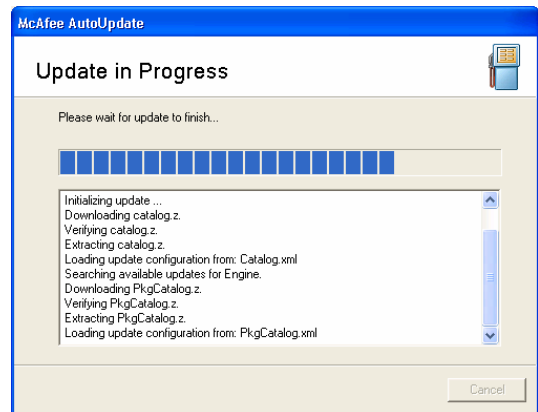


- Select the button next to **Typical** for the setup type, as shown in the screen here to the left. Then click on the **Next** button.

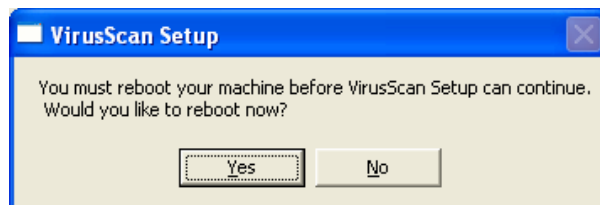
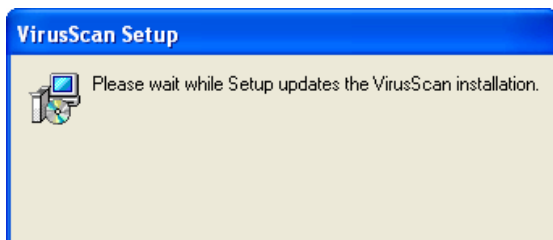
- You are now ready to install the VirusScan files onto your computer. Click on the **Install** button to start this process, as shown to the right. While VirusScan is installing on your computer, a screen like the one below will appear. It may take several minutes for the installation to complete, so please be patient with the installation process.



7. Once VirusScan has completed its installation, you will see a screen like the one below and to the left. Make sure that the box next to **Update Now** is checked, and click on the **Finish** button to complete the installation and to start updating your virus definition files. A screen like the one below and to the right should pop up, showing the progress of the file update. It may take several minutes to update the first time, so please be patient. Once the update process has been completed, click on the **Close** button to close this window, or it will close itself in 30 seconds.



8. After you have finished updating VirusScan, the installer will now install the latest VirusScan patch onto your computer. You should then see the screen shown below and to the left. Once the patch has finished installing, you will get a screen like the one shown below and to the right. Click on the **Yes** button to reboot your computer and complete the installation.



You have now successfully installed McAfee VirusScan 8.0i Enterprise on your computer! Note that by default, VirusScan is set to automatically update its files daily between 8:00 pm and 9:00 pm and when you dial-up to your Internet service provider. A system scan is scheduled for Wednesdays at noon. VirusScan will not update its files at that time, however, if your computer is turned off or if you are disconnected from the Internet. If you would like instructions on how to change any of these settings or how to run a virus scan, please point your browser to <http://www.saintmarys.edu/~virus/viruscan8/UsingVS8.htm> by clicking on this link, copying and pasting the web address, or typing this address into the location bar in your web browser. Thank you for taking the time to help Information Technology combat viruses on and off campus!