

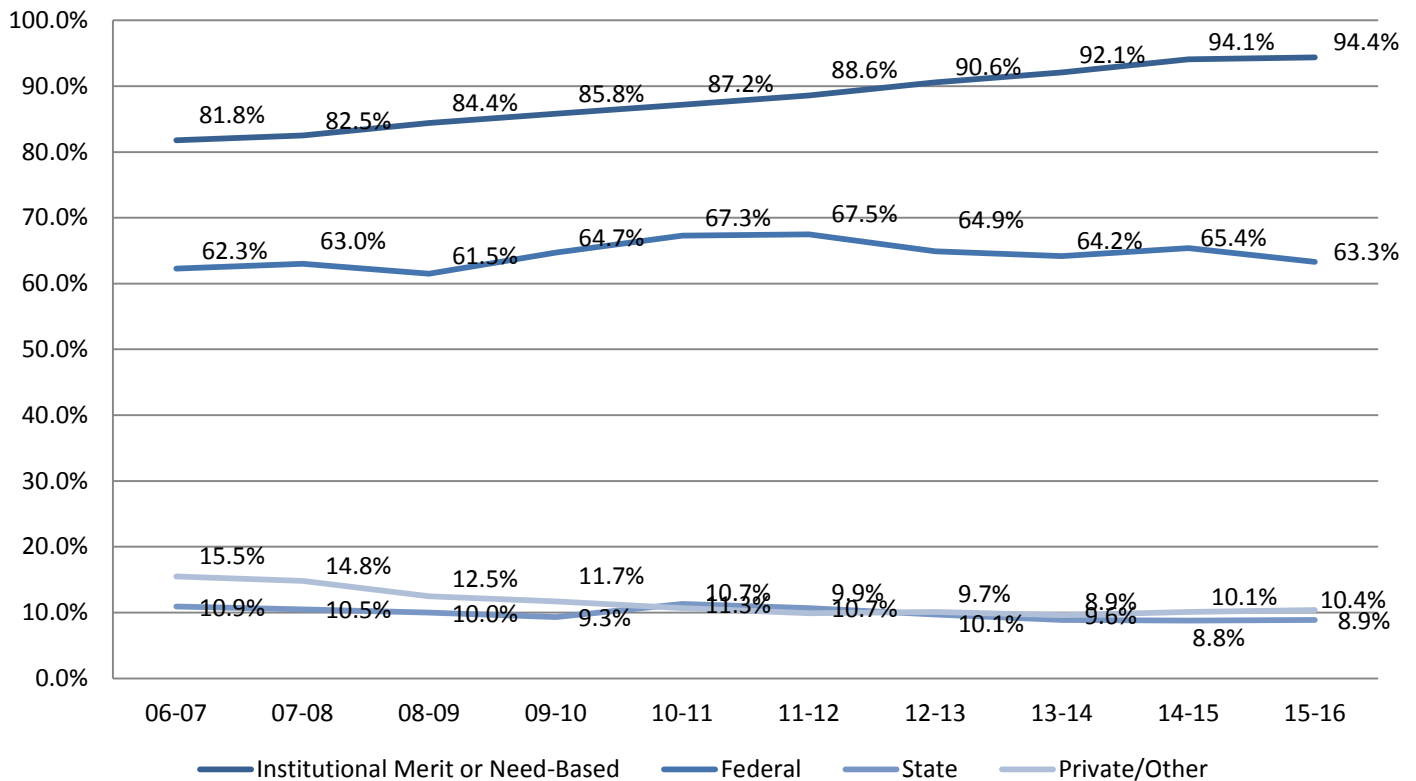
Percentage of Undergraduates Receiving Aid by Source and Type Ten Academic Years

Percentage of All Undergraduates Receiving Each Aid Type										
	06-07	07-08	08-09	09-10	10-11	11-12	12-13	13-14	14-15	15-16
Institutional Merit or Need-Based Aid	81.8%	82.5%	84.4%	85.8%	87.2%	88.6%	90.6%	92.1%	94.1%	94.4%
Merit Aid	67.7%	69.8%	71.7%	72.5%	74.3%	77.4%	82.2%	85.9%	90.7%	90.3%
Need-Based Aid	47.2%	45.3%	44.0%	47.5%	49.2%	48.5%	45.5%	47.3%	50.4%	53.2%
Institutional Aid (Other)										
Tuition Remission	11.3%	10.4%	10.7%	10.9%	10.7%	11.3%	11.1%	11.2%	11.1%	11.1%
Federal Aid	62.3%	63.0%	61.5%	64.7%	67.3%	67.5%	64.9%	64.2%	65.4%	63.3%
Grant Aid	11.3%	13.5%	12.7%	19.4%	24.0%	24.2%	20.6%	20.9%	22.1%	22.7%
Student Loans	61.0%	61.2%	59.7%	61.9%	63.8%	63.8%	61.7%	61.1%	62.5%	60.1%
Work Study	16.4%	18.0%	17.1%	19.3%	21.5%	22.7%	21.0%	19.1%	17.2%	16.8%
State Aid	10.9%	10.5%	10.0%	9.3%	11.3%	10.7%	9.7%	8.9%	8.8%	8.9%
Grant Aid	10.9%	10.5%	10.0%	9.3%	11.3%	10.7%	9.7%	8.9%	8.8%	8.9%
Private/Other	15.5%	14.8%	12.5%	11.7%	10.7%	9.9%	10.1%	9.6%	10.1%	10.4%
Alternative Loan	15.5%	14.8%	12.5%	11.7%	10.7%	9.9%	10.1%	9.6%	10.1%	10.4%
Aid from Any Source	90.8%	91.7%	93.4%	94.8%	95.4%	96.5%	95.7%	97.0%	98.0%	98.2%

Note: Institutional aid includes aid from restricted funds. Federal aid excludes parent loans. Percentages will not sum as these represent averages of only those who received aid in each category.

Note: Merit aid awarded prior to consideration of need, and thus contributes to meeting need

Percentage of Undergraduates Receiving Aid by Source



Source: Institutional Research: Banner Extract