
Admissions & First-Year Cohort

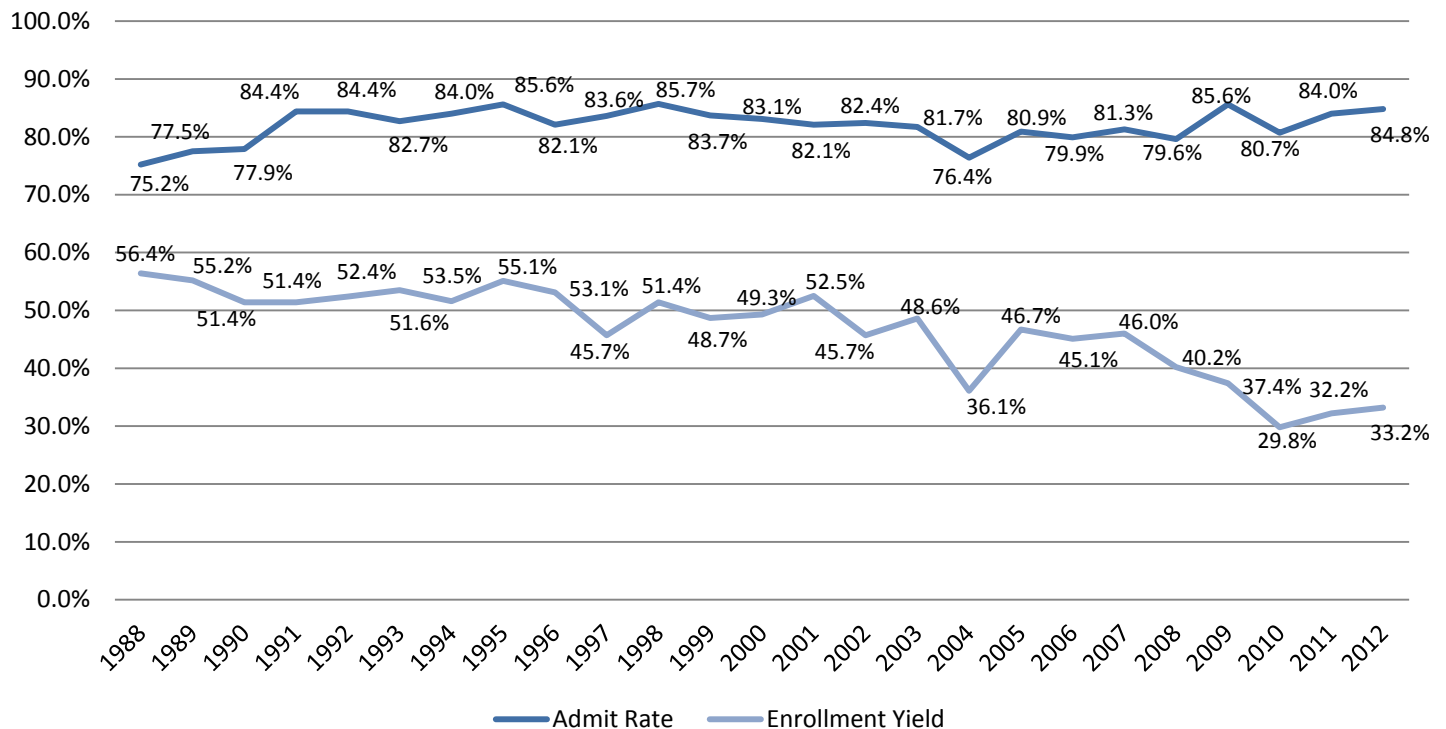
Contents:

- Pg. 8: Record of Applications and Admissions
- Pg. 9: Full-Time, First-Time Student Diversity
- Pg. 10: High School and Academic Profile
- Pg. 11: Admissions Profile: SAT Scores
- Pg. 12: Admissions Profile: ACT Scores
- Pg. 13: Full-Time, First-Time Student State of Origin

**Record of Applications and Admissions
Twenty-Five Cohort Years**

Year of Admission	Total Applications	Completed Applications	Number Admitted	Admit Rate	Number Enrolled	Enrollment Yield
1988	1175	1136	884	75.2%	499	56.4%
1989	1084	1054	840	77.5%	464	55.2%
1990	1030	1004	802	77.9%	412	51.4%
1991	883	858	745	84.4%	383	51.4%
1992	889	863	750	84.4%	393	52.4%
1993	888	853	734	82.7%	393	53.5%
1994	907	877	762	84.0%	393	51.6%
1995	819	791	701	85.6%	386	55.1%
1996	792	759	650	82.1%	345	53.1%
1997	867	837	725	83.6%	331	45.7%
1998	920	884	788	85.7%	405	51.4%
1999	1041	992	871	83.7%	424	48.7%
2000	1068	1008	888	83.1%	438	49.3%
2001	1011	931	830	82.1%	436	52.5%
2002	997	930	822	82.4%	376	45.7%
2003	1014	926	828	81.7%	402	48.6%
2004	1269	1147	969	76.4%	350	36.1%
2005	997	932	807	80.9%	377	46.7%
2006	1181	1033	944	79.9%	426	45.1%
2007	1281	1143	1041	81.3%	479	46.0%
2008	1422	1265	1132	79.6%	455	40.2%
2009	1357	1247	1162	85.6%	435	37.4%
2010	1387	1204	1119	80.7%	333	29.8%
2011	1453	1320	1220	84.0%	393	32.2%
2012	1482	1359	1256	84.8%	417	33.2%

Admit Rate and Enrollment Yield Trending



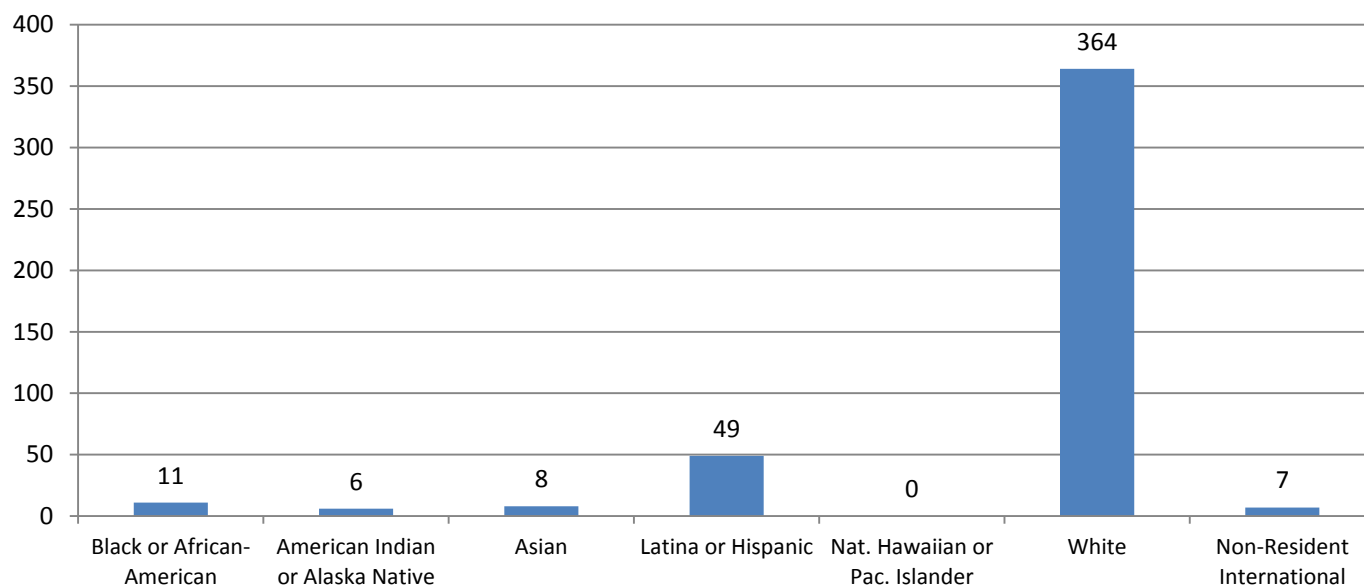
Source: Institutional Research: Banner Census Extract

First-Time, Full-Time Student Diversity Ten Cohort Years

	2003	2004	2005	2006	2007	2008	2009*	2010	2011	2012
Race/Ethnicity										
Black or African-American	6	2	1	11	4	6	6	9	5	4
American Indian or Alaska Native	1	4	1	2	3	2	1	0	0	0
Asian	6	10	9	8	5	12	8	10	2	5
Latina or Hispanic	19	16	21	20	32	31	46	27	34	49
Native Hawaiian or Pac. Islander*	-	-	-	-	-	-	0	1	0	0
Two or More Races*	-	-	-	-	-	-	4	8	9	11
Racial/Ethnic Minority Total	32	32	32	41	44	51	65	55	50	69
Racial/Ethnic Minority Percent	8.0%	9.1%	8.5%	9.6%	9.2%	11.2%	14.9%	16.5%	12.7%	16.5%
Race/Ethnicity Unknown	11	5	7	7	13	17	21	8	17	17
Race/Ethnicity Unknown Percent	2.7%	1.4%	1.9%	1.6%	2.7%	3.7%	4.8%	2.4%	4.3%	4.1%
White	355	311	337	377	421	382	345	268	318	324
White Percent	88.3%	88.9%	89.4%	88.5%	87.9%	84.0%	79.3%	80.5%	80.9%	77.7%
Total U.S. Citizens/Nationals	398	348	376	425	478	450	431	331	385	410
Non-Resident International	3	2	1	1	1	5	4	2	8	7
Non-Resident Int. Percent	0.7%	0.6%	0.3%	0.2%	0.2%	1.1%	0.9%	0.6%	2.0%	1.7%
Grand Total	402	350	377	426	479	455	435	333	393	417
Religious Affiliation										
Roman Catholic	82.6%	80.3%	81.4%	74.2%	78.2%	76.3%	78.9%	77.2%	78.4%	82.0%
Protestant/Other Christian	7.0%	9.9%	8.5%	10.3%	8.0%	9.0%	9.7%	11.1%	11.1%	8.4%
Non-Christian Faith	0.7%	0.6%	0.8%	0.9%	0.4%	0.4%	0.7%	0.3%	1.0%	0.2%
None	0.5%	0.3%	0.5%	0.5%	0.2%	1.3%	0.7%	0.6%	0.8%	1.2%
Unknown/No Response	9.0%	8.9%	8.8%	13.9%	13.2%	13.8%	9.9%	10.8%	8.7%	8.2%

*Fall 2009 marked the conversion to the new IPEDS race/ethnicity categories. Information is reported first as to whether a student identifies as Latina, then whether she is multiracial. Lastly race is reported. New categories were added in this year.

2012 Cohort Racial/Ethnic Diversity



Note: Students are able to select more than one race and totals will not sum to total number of students in cohort.

Source: Institutional Research – Banner Fall Census Extract; IPEDS Fall Enrollment Report

High School and Academic Profile Ten Cohorts

Year of Admission:	2003	2004	2005	2006	2007	2008	2009	2010	2011	2012
Total First-Time, Full-Time	402	350	377	426	479	455	435	333	393	417
Rank in High School Class										
Top 10%	33.3%	27.2%	31.8%	32.3%	32.4%	35.2%	37.7%	28.2%	31.4%	35.7%
Top 25%	68.0%	67.8%	66.1%	67.0%	65.1%	69.4%	65.9%	66.0%	68.6%	72.8%
Top 50%	95.7%	95.4%	93.8%	92.7%	94.2%	95.7%	92.9%	90.2%	92.9%	93.8%
Rank Unavailable	99	98	104	139	204	174	183	145	183	224
High School GPA										
3.75 or higher	43.0%	42.6%	44.1%	48.4%	47.2%	48.2%	48.5%	44.0%	48.5%	53.0%
3.50 to 3.74	23.1%	24.0%	22.5%	22.1%	23.2%	22.2%	21.6%	20.5%	22.2%	21.8%
3.25 to 3.49	16.2%	19.4%	19.6%	16.7%	18.0%	19.4%	15.6%	19.9%	14.5%	12.7%
3.00 to 3.24	13.2%	10.9%	10.9%	10.8%	10.2%	8.6%	10.1%	11.7%	10.7%	7.7%
2.50 to 2.99	4.5%	3.1%	2.9%	1.9%	1.5%	1.5%	4.1%	3.9%	4.1%	4.8%
2.00 to 2.49	0.0%	0.0%	0.0%	0.0%	0.0%	0.0%	0.0%	0.0%	0.0%	0.0%
Below 2.00	0.0%	0.0%	0.0%	0.0%	0.0%	0.0%	0.0%	0.0%	0.0%	0.0%
Average High School GPA	3.65	3.67	3.65	3.70	3.72	3.73	3.71	3.67	3.70	3.75
High School Type										
Public	52.7%	50.3%	54.7%	49.4%	39.5%	44.6%	53.7%	54.2%	53.2%	52.5%
Private	47.3%	49.7%	45.3%	50.1%	60.1%	54.9%	44.5%	45.5%	46.3%	46.8%
Home School	0.0%	0.0%	0.0%	0.5%	0.4%	0.5%	1.8%	0.3%	0.5%	0.7%
Average High School Enrollment	264	251	293	285	290	281	306	296	316	284

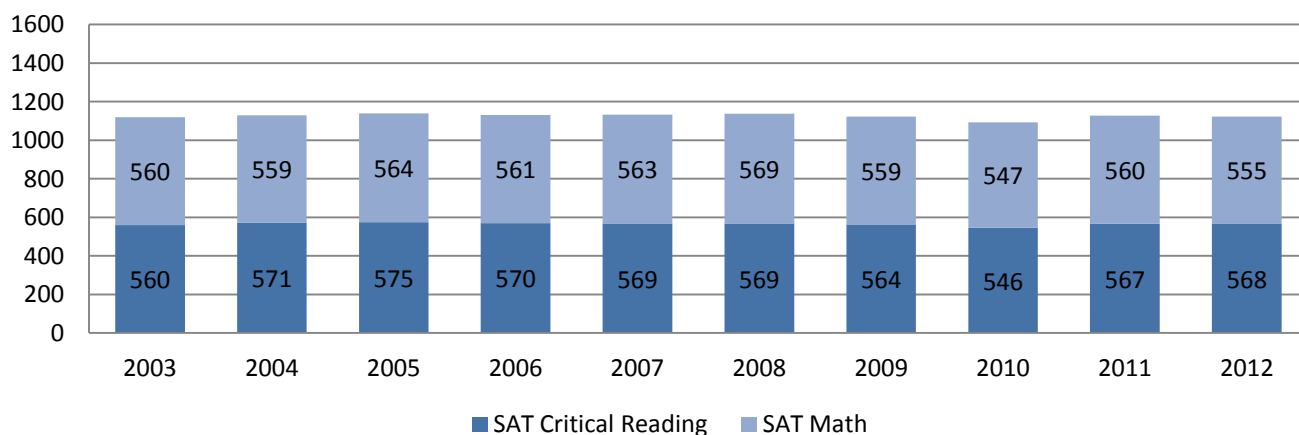
Accomplishments and Activities of the Class of 2016

- Three students were senior class presidents.
- More than half of the Class of 2016 were National Honor Society members and three were National Merit Scholarship Semi-Finalists.
- Fourteen students served as staff for their high school yearbooks and seven were yearbook editor.
- One student from the Class of 2016 was editor for their high school newspaper and four others were on the newspaper staff.
- More than a quarter of the Class of 2016 served on student government in high school.
- Ten students were involved with their high school television and/or radio stations. Six students were involved in 4-H.

**Admissions Profile: SAT Scores
Ten Cohorts**

Year of Admission:	2003	2004	2005	2006	2007	2008	2009	2010	2011	2012
Total First-Time, Full-Time	402	350	377	426	479	455	435	333	393	417
Total Submitting SAT Scores	304	264	279	291	317	281	267	185	203	208
Percent Submitting SAT Scores	75.6%	75.4%	74.0%	68.3%	66.2%	61.8%	61.4%	55.6%	51.7%	49.9%
SAT Critical Reading										
700-800	4.3%	4.5%	5.7%	3.4%	5.4%	4.3%	4.1%	2.2%	6.4%	6.7%
600-699	28.2%	31.8%	32.3%	35.1%	28.4%	32.4%	29.6%	23.8%	29.6%	30.8%
500-599	45.6%	48.5%	47.3%	43.6%	50.2%	49.1%	47.9%	45.9%	44.3%	43.8%
450-499	15.4%	10.2%	10.4%	14.1%	12.0%	11.0%	12.4%	18.4%	12.8%	14.9%
Below 450	6.6%	4.9%	4.3%	3.8%	4.1%	3.2%	6.0%	9.7%	6.9%	3.8%
SMC Median	560	570	570	570	570	570	560	550	570	570
SMC Mean	560	571	575	570	569	569	564	546	567	568
National Female Mean	503	504	505	502	500	499	497	498	495	493
SAT Mathematics										
700-800	2.6%	2.7%	1.8%	2.7%	3.8%	2.8%	3.0%	2.2%	4.9%	4.8%
600-699	27.5%	27.3%	31.5%	29.9%	30.0%	33.5%	27.0%	23.8%	28.1%	29.3%
500-599	50.2%	52.3%	51.6%	48.5%	47.9%	49.1%	50.2%	49.7%	49.3%	42.3%
450-499	12.8%	14.0%	9.0%	14.1%	13.6%	10.0%	15.0%	14.6%	11.8%	13.9%
Below 450	6.9%	3.8%	6.1%	4.8%	4.7%	4.6%	4.9%	9.7%	5.9%	9.6%
SMC Median	557	560	570	560	560	570	560	540	560	560
SMC Mean	560	559	564	561	563	569	559	547	560	555
National Female Mean	503	501	504	502	499	499	498	499	500	499
SAT Writing										
700-800	--	--	--	3.5%	5.0%	6.4%	4.9%	4.9%	5.4%	7.2%
600-699	--	--	--	34.0%	33.1%	35.9%	31.5%	27.0%	31.0%	26.9%
500-599	--	--	--	47.4%	45.1%	42.7%	44.2%	41.1%	47.3%	45.7%
450-499	--	--	--	11.6%	13.2%	11.4%	14.2%	18.9%	11.3%	13.5%
Below 450	--	--	--	3.5%	3.5%	3.6%	5.2%	8.1%	4.9%	6.7%
SMC Median	--	--	--	570	570	580	570	550	560	560
SMC Mean	--	--	--	571	575	580	566	556	569	565
National Female Mean	--	--	--	502	499	499	498	497	496	494

Average SAT Composite Distribution

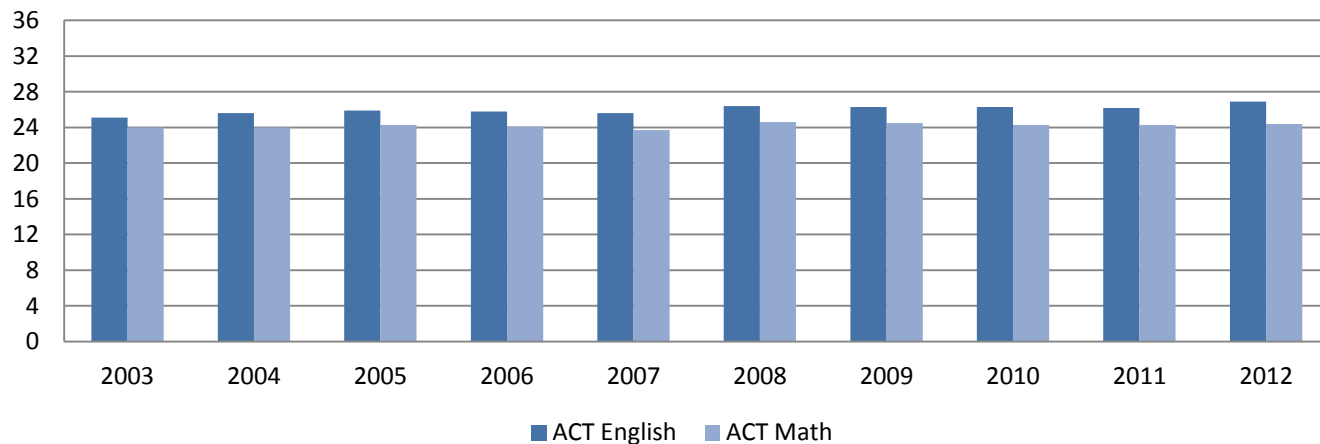


Source: College Board Online; Institutional Research: Banner Fall Census Extract

**Admission Profile: ACT Scores
Ten Cohorts**

Year of Admission:	2003	2004	2005	2006	2007	2008	2009	2010	2011	2012
Total First-Time, Full-Time	402	350	377	426	479	455	435	333	393	417
Total Submitting ACT Scores	268	239	253	300	351	322	314	243	279	306
Percent Submitting ACT Scores	66.7%	68.3%	67.1%	70.4%	73.3%	70.8%	72.2%	73.0%	71.0%	73.4%
ACT English										
30-36	15.3%	18.0%	19.8%	20.3%	18.8%	23.9%	26.8%	28.0%	21.9%	29.4%
24-29	51.9%	47.7%	52.2%	48.7%	49.6%	49.1%	42.4%	42.0%	51.6%	49.0%
18-23	31.0%	32.2%	26.9%	28.3%	28.5%	25.5%	27.7%	26.7%	24.4%	19.0%
12-17	2.0%	2.1%	1.2%	2.7%	3.1%	1.6%	3.2%	3.3%	2.1%	2.6%
Below 11	0.0%	0.0%	0.0%	0.0%	0.0%	0.0%	0.0%	0.0%	0.0%	0.0%
SMC Median	25.0	26.0	26.0	26.0	25.0	26.0	26.0	26.0	26.0	27.0
SMC Mean	25.1	25.6	25.9	25.8	25.6	26.4	26.3	26.3	26.2	26.9
National Female Mean	20.7	20.8	20.8	21.0	21.0	21.0	20.9	20.8	20.9	20.9
ACT Mathematics										
30-36	9.3%	4.2%	7.9%	6.3%	5.4%	8.7%	9.2%	10.7%	10.8%	5.9%
24-29	45.9%	60.7%	51.0%	54.0%	50.1%	56.2%	51.9%	48.6%	48.0%	57.5%
18-23	38.8%	31.4%	38.3%	36.0%	38.7%	32.9%	34.4%	34.6%	36.2%	32.0%
12-17	6.0%	3.8%	2.8%	3.7%	5.7%	2.2%	4.5%	6.2%	5.0%	4.6%
Below 11	0.0%	0.0%	0.0%	0.0%	0.0%	0.0%	0.0%	0.0%	0.0%	0.0%
SMC Median	24.0	24.0	24.0	24.0	24.0	25.0	25.0	25.0	24.0	25.0
SMC Mean	24.0	24.0	24.2	24.1	23.7	24.6	24.5	24.3	24.3	24.4
National Female Mean	20.1	20.2	20.2	20.3	20.4	20.4	20.4	20.5	20.6	20.6
ACT Composite										
30-36	4.9%	6.7%	7.9%	9.3%	7.7%	9.3%	11.8%	9.1%	10.4%	14.1%
24-29	55.2%	56.5%	57.3%	54.3%	52.1%	60.2%	55.1%	57.6%	53.0%	59.5%
18-23	38.1%	35.6%	34.8%	35.3%	38.2%	29.8%	31.9%	32.5%	35.5%	25.2%
12-17	1.9%	1.3%	0.0%	1.0%	2.0%	0.6%	1.3%	0.8%	1.1%	1.3%
Below 11	0.0%	0.0%	0.0%	0.0%	0.0%	0.0%	0.0%	0.0%	0.0%	0.0%
SMC Median	24.0	25.0	25.0	25.0	24.0	25.0	25.0	25.0	25.0	25.0
SMC Mean	24.4	24.7	24.9	24.8	24.4	25.2	25.1	25.0	24.9	25.5
National Female Mean	20.8	20.9	20.9	21.0	21.2	21.0	21.1	20.9	21.0	21.0

Average ACT English and Math Scores



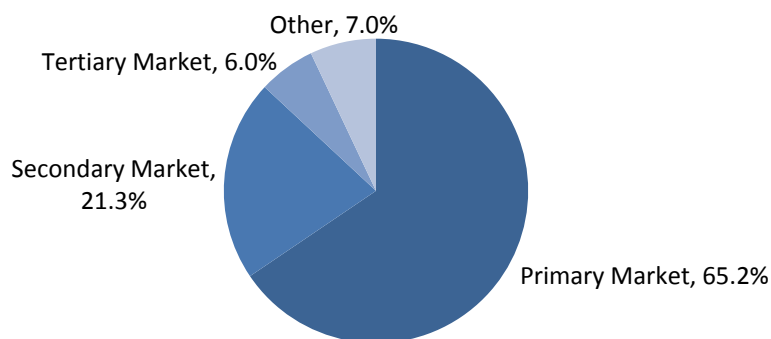
Source: ACT National Score Reports; Institutional Research: Banner Fall Census Extract

**Full-Time, First-Time Student State of Origin
Ten Cohort Years**

	2003	2004	2005	2006	2007	2008	2009	2010	2011	2012
Primary Market States										
Illinois	77	54	54	87	93	66	73	58	77	77
Indiana	111	92	99	103	123	124	133	94	93	96
Michigan	49	54	62	74	67	69	59	53	62	73
Ohio	42	41	36	27	43	33	34	30	29	28
Subtotal	279	241	251	291	326	292	299	235	261	274
<i>% of Total</i>	<i>69.4%</i>	<i>68.9%</i>	<i>66.6%</i>	<i>68.3%</i>	<i>68.1%</i>	<i>64.2%</i>	<i>68.7%</i>	<i>70.6%</i>	<i>66.4%</i>	<i>65.7%</i>
Secondary Market States										
California	10	7	9	11	18	13	17	10	15	32
Florida	12	12	15	7	15	12	7	6	5	10
Minnesota	8	7	11	8	16	11	7	6	9	5
Missouri	3	3	6	2	2	6	7	3	1	3
New Jersey	8	5	5	10	8	11	8	5	11	7
New York	3	5	1	6	2	4	5	3	10	6
Pennsylvania	13	18	14	17	20	24	11	10	10	15
Texas	5	5	8	8	12	7	11	7	9	7
Wisconsin	5	5	12	4	9	12	10	5	9	4
Subtotal	67	67	81	73	102	100	83	55	79	89
<i>% of Total</i>	<i>16.7%</i>	<i>19.1%</i>	<i>21.5%</i>	<i>17.1%</i>	<i>21.3%</i>	<i>22.0%</i>	<i>19.1%</i>	<i>16.5%</i>	<i>20.1%</i>	<i>21.3%</i>
Tertiary Market States										
Connecticut	2	1	1	2	3	1	4	1	4	3
Georgia	7	5	5	4	9	8	9	7	1	6
Iowa	2	3	5	3	2	5	1	4	2	3
Kansas	--	--	3	2	0	3	2	1	2	1
Kentucky	3	2	2	1	6	2	2	3	0	0
Maryland	4	3	1	4	0	1	3	2	2	3
Massachusetts	1	1	2	2	1	2	3	3	1	2
Tennessee	4	5	2	4	3	4	2	1	6	5
Virginia	3	0	3	10	6	3	3	3	3	2
Subtotal	26	20	24	32	30	29	29	25	21	25
<i>% of Total</i>	<i>6.5%</i>	<i>5.7%</i>	<i>6.4%</i>	<i>7.5%</i>	<i>6.3%</i>	<i>6.4%</i>	<i>6.7%</i>	<i>7.5%</i>	<i>5.3%</i>	<i>6.0%</i>
Other Markets										
Unclassified States	27	20	20	28	18	29	21	16	24	22
International	3	2	1	2	3	5	3	2	8	7
Subtotal	30	22	21	30	21	34	24	18	32	29
<i>% of Total</i>	<i>7.5%</i>	<i>6.3%</i>	<i>5.6%</i>	<i>7.0%</i>	<i>4.4%</i>	<i>7.5%</i>	<i>5.5%</i>	<i>5.4%</i>	<i>8.1%</i>	<i>7.0%</i>
Total	402	350	377	426	479	455	435	333	393	417

Note: In 2005, Kansas was reclassified as a tertiary market state.

Fall 2012 Cohort Market Origin Distribution



Source: Institutional Research – Banner Fall Census Extract; IPEDS Fall Enrollment Report