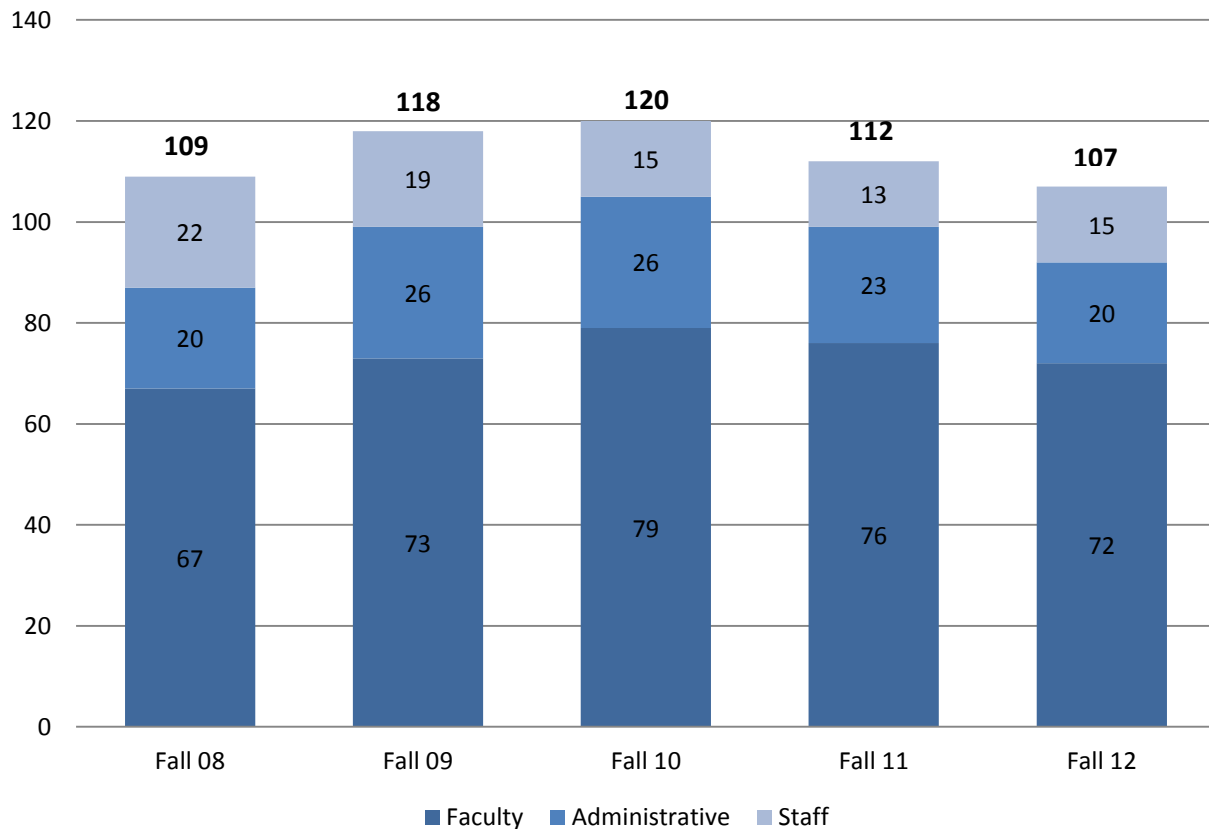


Part-Time Employees by Type Five Fall Semesters

	Fall 08	Fall 09	Fall 10	Fall 11	Fall 12
Part-Time Employee Type					
Primarily Instruction	67	73	79	76	--
Executive/administrative/managerial	1	0	0	0	--
Other professionals (support/service)	19	25	25	21	--
Technical and paraprofessionals	0	1	1	2	--
Clerical and secretarial	10	6	4	2	--
Skilled crafts	1	1	0	1	--
Service/maintenance	11	12	11	10	--
Postsecondary Teachers/Instructional Staff	--	--	--	--	72
Library and Instructional Support	--	--	--	--	4
Management	--	--	--	--	0
Business and Financial Operations	--	--	--	--	0
Computer, Engineering, and Science	--	--	--	--	1
Community Service, Legal, Arts, and Media	--	--	--	--	11
Healthcare Practitioners and Technical	--	--	--	--	4
Service Occupations	--	--	--	--	10
Sales and Related Occupations	--	--	--	--	0
Office and Administrative Support Occupations	--	--	--	--	4
Natural Resources, Construction, & Maintenance	--	--	--	--	1
Production, Transportation, and Material Moving	--	--	--	--	0
Total	109	118	120	112	107

Note: Beginning in Fall 2012, IPEDS began utilizing new employee SOC reporting categories.

Distribution of Part-Time Employees



Source: IPEDS Human Resources Survey