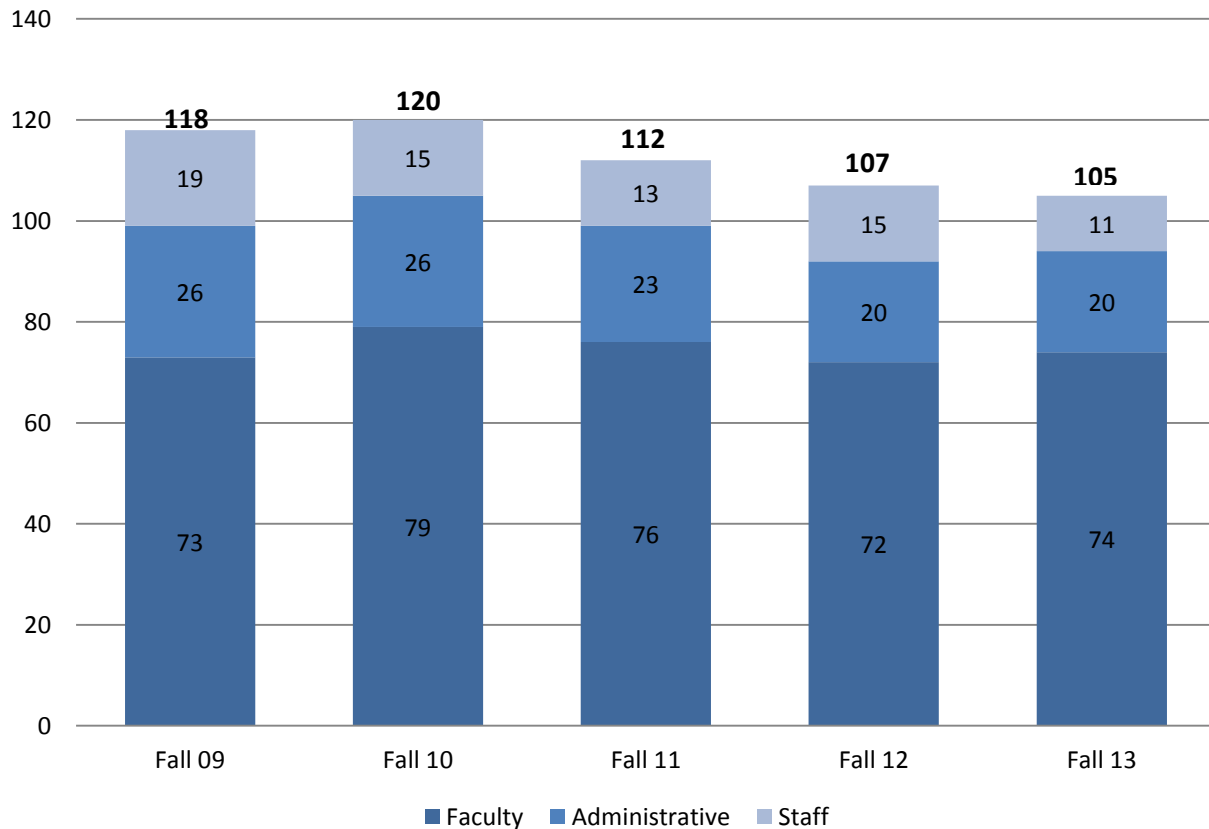


**Part-Time Employees by Type  
Five Fall Semesters**

|  | Fall 09    | Fall 10    | Fall 11    | Fall 12    | Fall 13    |
|--|------------|------------|------------|------------|------------|
| <b>Part-Time Employee Type</b>   |            |            |            |            |            |
| Primarily Instruction  | 73         | 79         | 76         | --         | --         |
| Executive/administrative/managerial  | 0          | 0          | 0          | --         | --         |
| Other professionals (support/service)  | 25         | 25         | 21         | --         | --         |
| Technical and paraprofessionals  | 1          | 1          | 2          | --         | --         |
| Clerical and secretarial   | 6          | 4          | 2          | --         | --         |
| Skilled crafts   | 1          | 0          | 1          | --         | --         |
| Service/maintenance  | 12         | 11         | 10         | --         | --         |
| <b>Beginning in Fall 2012, IPEDS began reporting new Standard Occupational Classifications</b> |            |            |            |            |            |
| Postsecondary Teachers/Instructional Staff   | --         | --         | --         | 72         | 74         |
| Library and Instructional Support  | --         | --         | --         | 4          | 3          |
| Management   | --         | --         | --         | 0          | 0          |
| Business and Financial Operations  | --         | --         | --         | 0          | 0          |
| Computer, Engineering, and Science   | --         | --         | --         | 1          | 0          |
| Community Service, Legal, Arts, and Media  | --         | --         | --         | 11         | 13         |
| Healthcare Practitioners and Technical   | --         | --         | --         | 4          | 4          |
| Service Occupations  | --         | --         | --         | 10         | 4          |
| Sales and Related Occupations  | --         | --         | --         | 0          | 0          |
| Office and Administrative Support Occupations  | --         | --         | --         | 4          | 6          |
| Natural Resources, Construction, & Maintenance   | --         | --         | --         | 1          | 1          |
| Production, Transportation, and Material Moving  | --         | --         | --         | 0          | 0          |
| <b>Total</b>   | <b>118</b> | <b>120</b> | <b>112</b> | <b>107</b> | <b>105</b> |

**Distribution of Part-Time Employees**



Source: IPEDS Human Resources Survey