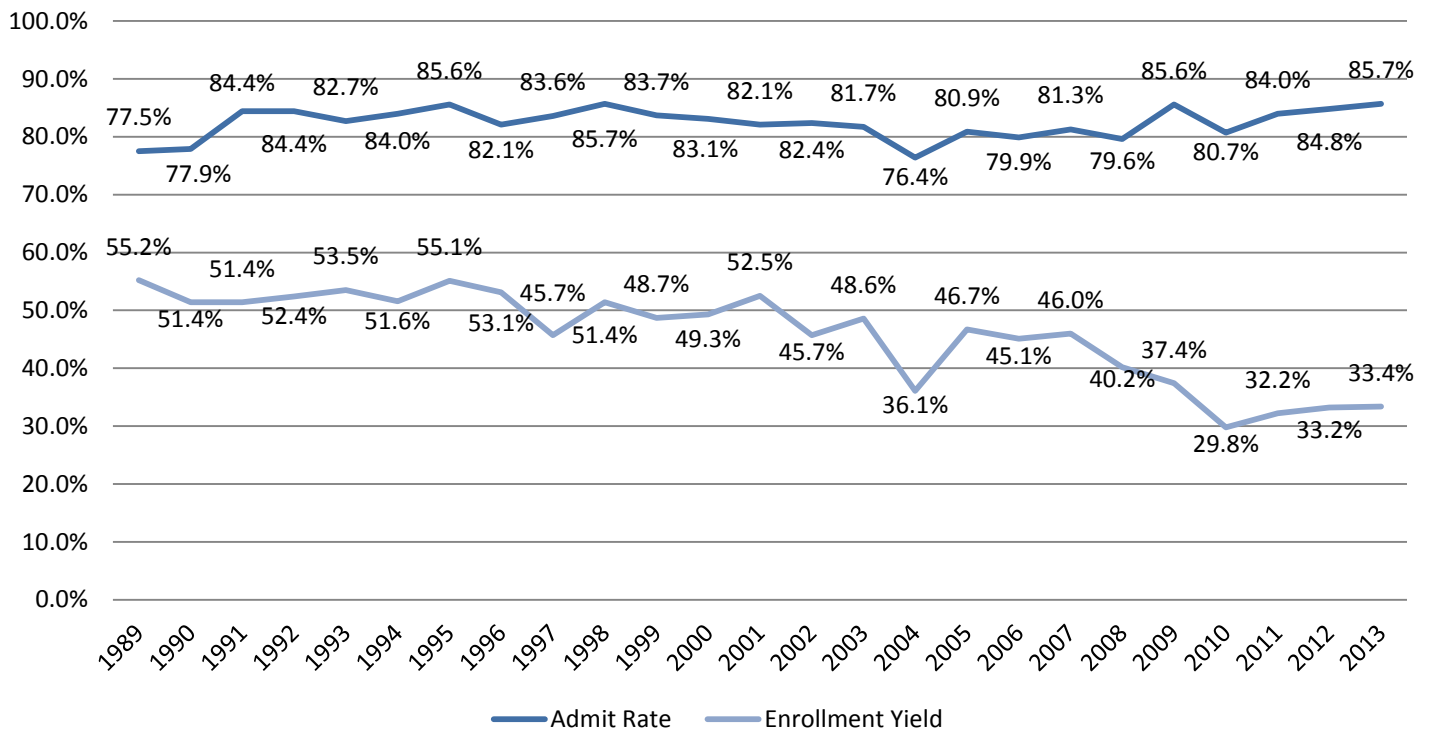


Record of Applications and Admissions Twenty-Five Cohort Years

Year of Admission	Total Applications	Completed Applications	Number Admitted	Admit Rate	Number Enrolled	Enrollment Yield
1989	1084	1054	840	77.5%	464	55.2%
1990	1030	1004	802	77.9%	412	51.4%
1991	883	858	745	84.4%	383	51.4%
1992	889	863	750	84.4%	393	52.4%
1993	888	853	734	82.7%	393	53.5%
1994	907	877	762	84.0%	393	51.6%
1995	819	791	701	85.6%	386	55.1%
1996	792	759	650	82.1%	345	53.1%
1997	867	837	725	83.6%	331	45.7%
1998	920	884	788	85.7%	405	51.4%
1999	1041	992	871	83.7%	424	48.7%
2000	1068	1008	888	83.1%	438	49.3%
2001	1011	931	830	82.1%	436	52.5%
2002	997	930	822	82.4%	376	45.7%
2003	1014	926	828	81.7%	402	48.6%
2004	1269	1147	969	76.4%	350	36.1%
2005	997	932	807	80.9%	377	46.7%
2006	1181	1033	944	79.9%	426	45.1%
2007	1281	1143	1041	81.3%	479	46.0%
2008	1422	1265	1132	79.6%	455	40.2%
2009	1357	1247	1162	85.6%	435	37.4%
2010	1387	1204	1119	80.7%	333	29.8%
2011	1453	1320	1220	84.0%	393	32.2%
2012	1482	1359	1256	84.8%	417	33.2%
2013	1529	1430	1310	85.7%	437	33.4%

Admit Rate and Enrollment Yield Trending



Source: Institutional Research: Banner Census Extract